



MONTHLY MEMBERSHIP PROGRESS REPORT

District 105 C

Results as of: 06/30/2018

GMT: JOOST PAIJMANS

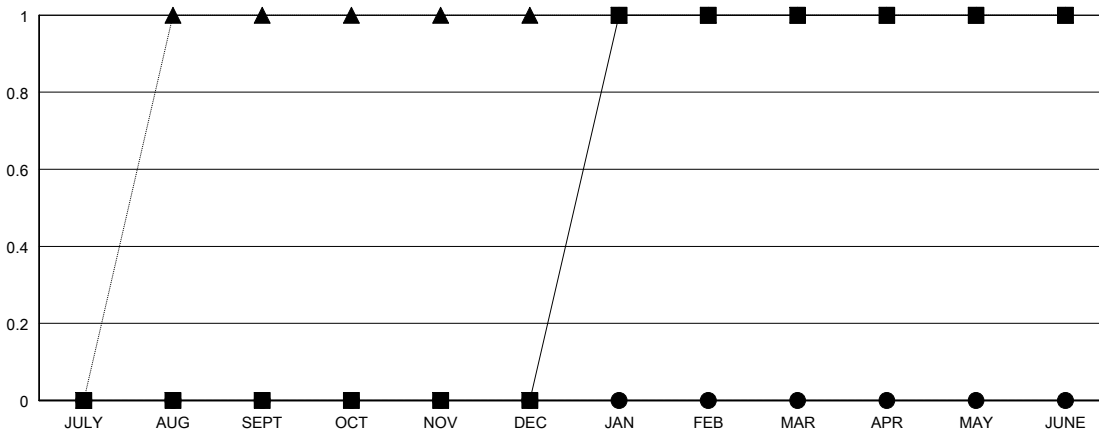
LOCATION ENGLAND

GMT CA

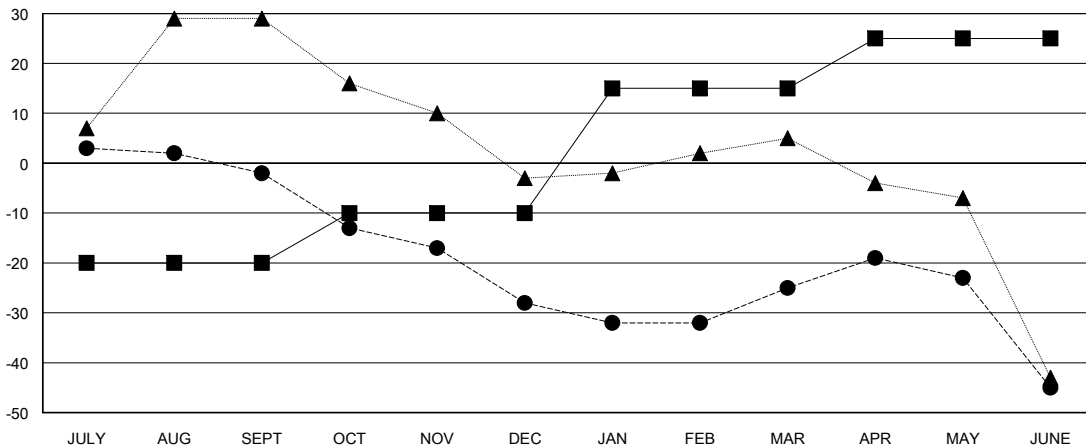
Clubs			
RESULTS FOR 2017-2018			
QUARTER	NEW CLUB GOAL	NEW CLUBS	DROPPED CLUBS
JULY/AUG/SEPT	0	0	0
OCT/NOV/DEC	0	0	0
JAN/FEB/MAR	1	0	0
APR/MAY/JUNE	0	0	0

Members			
RESULTS FOR 2017-2018			
QUARTER	MEMBER GROWTH NET GOAL	MEMBER GROWTH ACTUAL	DROPPED MEMBERS ACTUAL (including transfers)
JULY/AUG/SEPT	-20	12	14
OCT/NOV/DEC	10	8	31
JAN/FEB/MAR	25	31	27
APR/MAY/JUNE	10	31	48

GOALS AND ACTUAL NEW CLUBS CUMULATIVE



GOALS AND ACTUAL MEMBERS CUMULATIVE



DROPPED CLUBS: 0	36 CLUBS OF 51 ADDED 1 OR MORE NEW MEMBERS	<u>GENDER DISTRIBUTION</u>	
DROPPED MEMBERS		MALE	557 (66.55%)
DECEASED	19	FEMALE	280 (33.45%)
CLUB CANCELLED	0	Women Percentage Fiscal Year Goal: 30%	
OTHER	101	TOTAL FAMILY UNIT MEMBERS	0
TOTAL	120	FAMILY MEMBERS PAYING HALF DUES	0

[CLICK HERE FOR CUMULATIVE MEMBERSHIP DATA](#)